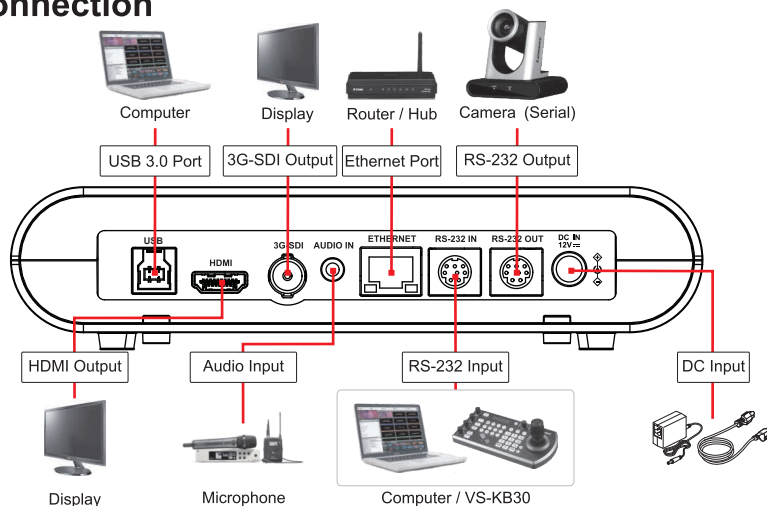
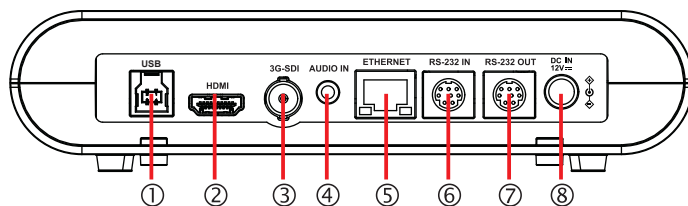


1. Product connection



2. I/O Function Descriptions



| No. | Item | Description |
|-----|-------------------|--|
| 1 | USB 3.0 Port | Transmits live video to your computer via USB |
| 2 | HDMI Output | HDMI output |
| 3 | 3G-SDI Output | 3G-SDI output |
| 4 | Audio IN | 3.5mm Line In /Mic In |
| 5 | Ethernet Port | Supports routers or hubs with PoE (IEEE802.3af) power supply |
| 6 | RS-232 Input | RS-232 input port (connect max. 7 cameras) |
| 7 | RS-232 Output | RS-232 output port (connect max. 7 cameras) |
| 8 | DC 12V Power Port | DC in port |

3. Precautions for Installation

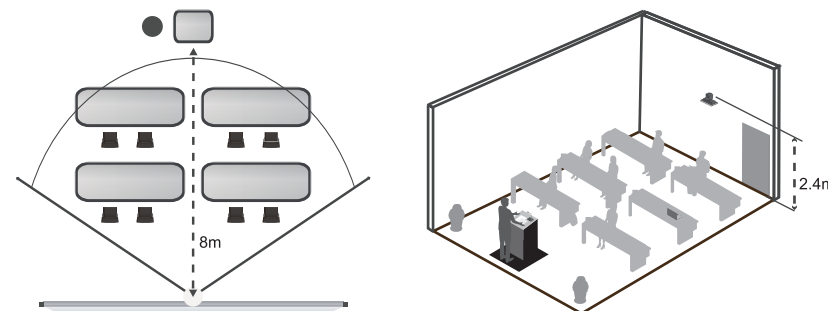
3.1 Use the provided DC 12V power cord or a PoE router or hub to supply power via a network cable.

* Camera supports PoE (IEEE802.3af)

3.2 Tracking distance range: 2m-14m. Optimal tracking distance 8m.

3.3 Vertical mounting height: 2m-3m, Optimal installation height: 2.4m.

* The default maximum tracking distance is 12 meters. It can be changed to 14 meters via the webpage.



* For best tracking results, avoid placing images of people on posters or screens behind the subject.

4. View Camera Images

■ HDMI/ 3G-SDI Image Output

Connect an HDMI or SDI cable to output HD video.

*The default resolution of camera is 1920 x1080 60 fps

■ USB Image Output

Connect to computer with a USB 3.0 cable, and use Lumens USB PTZ Camera Controller software* to view live images and control the camera. Use camera as a webcam in Skype, Zoom, Microsoft Teams and other video conferencing apps.

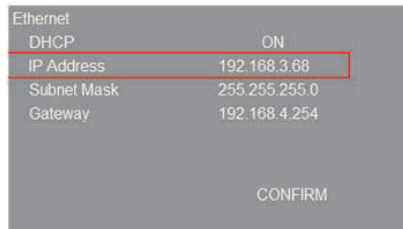
*Please visit Lumens' website and go to DOWNLOAD to download Lumens software (<https://www.MyLumens.com/Download>)

■ Network Image Output

Connect camera to network router using Cat5e or Cat6 to view live video and control the camera via a web browser.

To discover the IP address of the camera, use the remote control to open the OSD Menu > [Network], check the IP address.

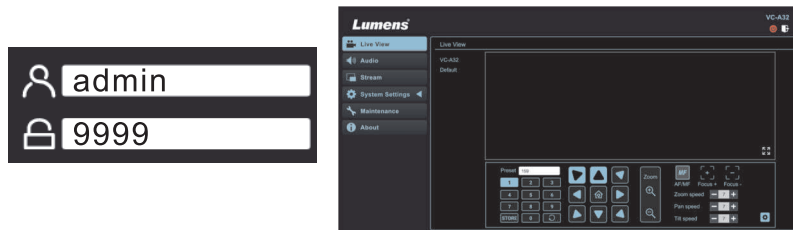
*If connecting the camera directly to your computer, the default IP of camera is 192.168.100.100.



Open a web browser, and enter the IP address in the address bar.



Enter the username and password .

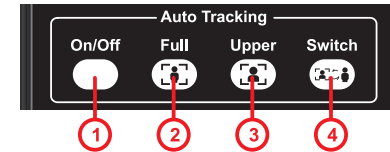


5. Start Tracking

Press the remote control to start the auto-tracking function

*Power / Standby LED flashes green when the tracking function of the camera is activated.

*Choose either Auto Tracking function or Auto-Framing function.



| Items | Button Name | Function |
|-------|---------------|---|
| 1 | Auto Tracking | Enable/Disable Auto Tracking. |
| 2 | Full | Camera frames presenter's full body. |
| 3 | Upper | Camera frames presenter's torso. |
| 4 | Switch | Switch target to a different presenter. |

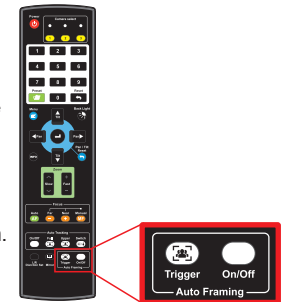
6. Advanced Function

■ Auto-Framing

1 With Auto-Framing technology, the camera will automatically detect the position of the human body and adjust the person to the center of the screen according to the number of people in the meeting scene to present the best image and enhance the efficiency of the meeting.

2 Press the Auto-Framing button on the remote control to enable/disable the smart viewfinder function.

*Choose either Auto Tracking function or Auto-Framing function.



*For New Tek product operation or instructions, please go to <http://new.tk/NDIHX-Driver-Win>

* Please visit YouTube [My Lumens] channel to watch the related videos for instructions

